

SWIVL-EZE®

EXCEEDS THE HIGHEST STANDARDS

The American Boat & Yacht Council has established rigorous safety codes for seating hardware. Swivl-Eze welcomes these standards because we know seating is the critical interface between a boating passenger... and a safe and comfortable boat. We exceed ABYC standards to ensure the strength and safety of every Swivl-Eze product.

ABYC REQUIREMENTS REFERENCE GUIDE

ABYC H31 Seat Standards

General Requirements for all seat types. (AO, AN, B)

31.6.1	Provided with a means to prevent unintentional detachment
31.8.7	Withstand static load of 450 lbs.
31.8.13.1	Adjustable height seats must withstand vertical dynamic test

Specific Requirements based on seat type (Catalog reference code)



Type A: Operator (Used at the helm/driver position)

31.7.6.1	Must have positive locking swivels which withstand 150 ft. lbs. of torque
31.7.6.2	All seats interchangeable with the operator's seat must meet the requirements of this section.
31.3	A seat designed for occupancy while the vessel is underway at any speed
31.7.1	Employ a locking mechanism for each plane or axis of movement
31.7.4	Seats w/fore/aft adjustment must sustain static load of 300 lbs. for 3 minutes, in mid position
31.7.5	Seats with a vertical adjustment feature shall have a positive locking mechanism
31.8.3	Sustain 10 impacts of 225 lbs.



Type A: Non-Operator (Not to be used at the helm/driver position)

31.7.3	Swivel locking mechanism must sustain torque of 30 ft. lbs.
31.3	A seat designed for occupancy while the vessel is underway at any speed
31.7.1	Employ a locking mechanism for each plane or axis of movement
31.7.4	Seats w/fore/aft adjustment must sustain static load of 300 lbs. for 3 minutes, in mid position
31.7.5	Seats with a vertical adjustment feature shall have a positive locking mechanism
31.8.3	Sustain 10 impacts of 225 lbs.



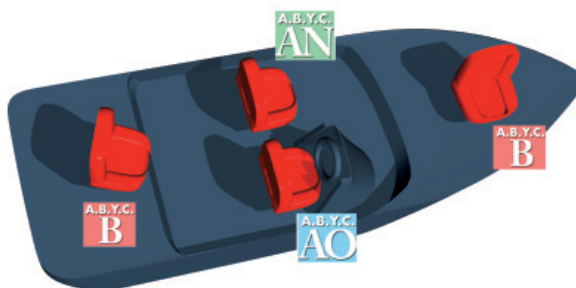
Type B (Not to be used at the helm/driver position)

31.3	A seat designed for occupancy only at boat speeds not exceeding five miles per hour
31.8.3	Sustain dynamic loads at 1/2 the velocity required for Type A seats

Exceptions: 31.2.1

31.2.1	ABYC H31 standards do not apply to Canoes, Kayaks, Sailboats, Inflatables, Race Boats, Tiller Steered Boats, and boats rated for less than 10 horsepower or manual propulsion.
--------	--

Standards at a Glance To make specifying simple, we've created an easy visual coding system below. Throughout this catalog, each code shows the rating applied to individual hardware.



Blue "AO" = Type A/Operator OK for Helm/Driver position



Green "AN" = Type A/Non-Operator Not to be used at Helm/Driver position



Red "B" = Type B Slow Speed Not to be used at Helm/Driver position For speeds not to exceed 5 mph

And look for this boat icon that shows the typical boat locations where each ABYC rating applies.



325 PEDESTAL SYSTEM PINNACLE SERIES



Strong, Stable and Corrosion Resistant

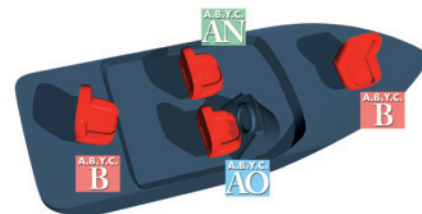
- 3-1/4" anodized tube center
- The tube and base are anodized cast aluminum for corrosion protection
- To increase support, the seat mount slide is wider and can accommodate larger seats with seating areas up to 24" and offers 6" of forward/aft travel
- The positive self locking mechanism is improved and, due to the X glide design in the slide extrusion, the stability increases with the weight.




Clean, Uncomplicated Styling

- A black trim ring on the base hides the fasteners and offers a clean, sleek appearance while extruded lines on the tube add cosmetic appeal. Meets ABYC H31.6.1

Easy to Reach/Access Handles

- Slide and swivel are both activated by cables that can be mounted under the seat at the front or side for easy access.
- Just pull a countoured handle to unlock the slide or swivel mechanism, release to lock in current position



-  Blue "AO" = Type A/Operator OK for Helm/Driver position
-  Green "AN" = Type A/Non-Operator Not to be used at Helm/Driver position
-  Red "B" = Type B Slow Speed Not to be used at Helm/Driver position For speeds not to exceed 5 mph

Meets ABYC H-31 Standards for Type AO Seats



Description	Bulk Packaging	Aftermarket Packaging
SEAT MOUNTS AND SLIDER		
Cable Slider, 24" Cable, 0° Tilt	898661-B50-024	—
FIXED HEIGHT BELL PEDESTALS, 9-INCH DIAMETER BASE		
6" Height, Anodized Base and Tube, Black Trim Ring	890601B	—
7" Height, Anodized Base and Tube, Black Trim Ring	890701B	—
8" Height, Anodized Base and Tube, Black Trim Ring	890801B	—
9" Height, Anodized Base and Tube, Black Trim Ring	890901B	—
10" Height, Anodized Base and Tube, Black Trim Ring	891001B	—
11" Height, Anodized Base and Tube, Black Trim Ring	891101B	—
12" Height, Anodized Base and Tube, Black Trim Ring	891201B	—
13" Height, Anodized Base and Tube, Black Trim Ring	891301B	—
14" Height, Anodized Base and Tube, Black Trim Ring	891401B	—
15" Height, Anodized Base and Tube, Black Trim Ring	891501B	—
16" Height, Anodized Base and Tube, Black Trim Ring	891601B	—

SEASPORT 2-7/8" PRODUCTS



Built to Handle the Big Water

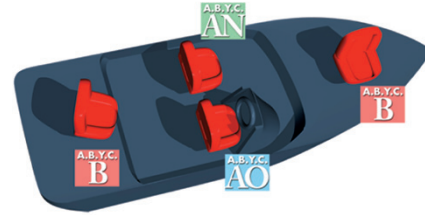
- Heavy-duty 2-7/8" posts and 9" dia. machined bases are engineered for strength and safety in harsh offshore conditions.

Type A/Operator Models lead the industry with these features:

- Ergonomic positive-locking handles with Stainless Steel components.
- PowerLock™ Multi-Action handle controls both swiveling and height adjustment. No more wondering which handle does what
- TwinGlide™ bushing ensures smooth operation and maximum stability at any height position
- EZ-Lock™ CAM-Action makes seat removal simple. When engaged, seat mount is posi-locked to the post and swivels free

SeaSport™ Seat Mount

- Dual cable activated model allows remote control for both slide and swivel.



Blue "AO" = Type A/Operator OK for Helm/Driver position

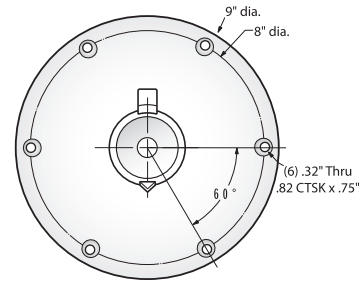
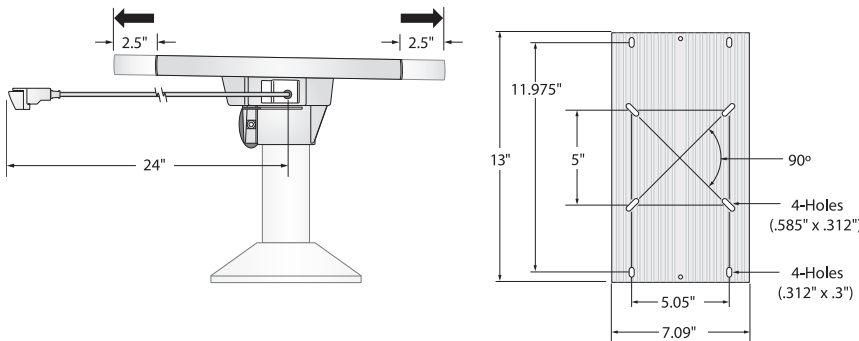


Green "AN" = Type A/Non-Operator Not to be used at Helm/Driver position



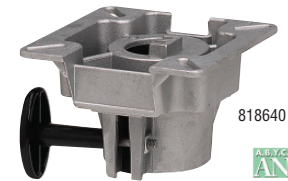
Red "B" = Type B Slow Speed Not to be used at Helm/Driver position For speeds not to exceed 5 mph

Not recommended to interchange with other manufacturers' products



SeaSport 2-7/8" Seat Mounts

Description	ABYC Code	Installed Height	Bulk Packaging	Aftermarket Packaging**
SEAT MOUNTS WITHOUT SLIDER				
Aluminum, w/ Friction Control, 3° Tilt	AN	5/8"	818640	—
Aluminum, w/ Friction Control, 3° Tilt	AO	5/8"	818641	—
SEAT MOUNTS WITH SLIDER				
Aluminum, w/ Friction Control, 3° Tilt	AN	1"	828660	—
Aluminum, w/ Friction Control, 3° Tilt, w/ locking handle	AO	1"	828661	—
Aluminum, w/ Friction Control, 0° Tilt, w/ locking handle	AO	1"	828661-0	—
SEAT MOUNTS WITH CABLE ACTIVATED SLIDER				
Aluminum, w/ Friction Control, 3° Tilt, 24" Cable w/ Slider Release Handle	AO	1"	848661-B51-324	—
Aluminum, w/ Friction Control, 0° Tilt, 24" Cable w/ Slider Release Handle	AO	1"	848661-B51-024	—
SEAT MOUNTS WITH CABLE ACTIVATED SLIDER/SWIVEL				
Aluminum, w/ Friction Control, 3° Tilt, 24" Cable w/ Slider/Swivel Release Handles	AO	1"	868661-B51-324	868661-B51-3243



U.S. Patent Numbers: 7,451,958 and 7,303,236

** Individual Carton

SeaSport 2-7/8" Bell Pedestals, Fixed Height

Not recommended to interchange with other manufacturers' products

Description	ABYC Code	Bulk Packaging	Aftermarket Packaging**
FIXED HEIGHT BELL PEDESTALS (1)			
5" H, Low Profile, 9" Machined Base	AO	886051	—
6" H, Satin Anodized Post, 9" Machined Base	AO	860601	—
7" H, Satin Anodized Post, 9" Machined Base	AO	860701	—
8" H, Satin Anodized Post, 9" Machined Base	AO	860801	—
10" H, Satin Anodized Post, 9" Machined Base	AO	861001	—
15-1/2" H, Satin Anodized Post, 9" Machined Base	AO	861551	—
6" H, Satin Anodized Post, 9" Anodized Machined Base	AO	860601-TP	—
8" H, Satin Anodized Post, 9" Anodized Machined Base	AO	860801-TP	—
9" H, Satin Anodized Post, 9" Anodized Machined Base	AO	860901-TP	—
10" H, Satin Anodized Post, 9" Anodized Machined Base	AO	861001-TP	—
11" H, Satin Anodized Post, 9" Anodized Machined Base	AO	861101-TP	—
15-1/2" H, Satin Anodized Post, 9" Anodized Machined Base	AO	861551-TP	—
17-1/2" H, Satin Anodized Post, 9" Anodized Machined Base	AO	861751-TP	—
9" H, Camo Colored Post, 9" Camo Colored Base	AO	860901BK	—
12" H, Camo Colored Post, 9" Camo Colored Base	AO	861101BK	—
FIXED HEIGHT BELL PEDESTAL SETS WITH SEAT MOUNT			
8" H, Satin Anodized Post, 9" Machined Base, 3° Tilt	AN	—	886408
12-1/2" H, Satin Anodized Post, 9" Machined Base, 3° Tilt	AN	—	8864125
15-1/2" H, Satin Anodized Post, 9" Machined Base, 3° Tilt	AN	—	8864155
15-1/2" H, Satin Anodized Post, 9" Powdered Base, 3° Tilt	AO	—	861550-TP
FIXED HEIGHT BELL PEDESTALS WITH SEAT MOUNT AND SLIDE			
15-1/2" H, Satin Anodized Post, 9" Anodized Powdered Base, 3° Tilt	AO	—	861552-TP



SeaSport 2-7/8" Bell Pedestals, Adjustable Height

Not recommended to interchange with other manufacturers' products

Description	ABYC Code	Bulk Packaging	Aftermarket Packaging**
ADJUSTABLE HEIGHT POWER PEDESTALS - WITH INTEGRAL SEAT MOUNT			
12-1/4" - 15-1/4" H, Satin Anodized Post, 9" Base	AO	—	88100
14-1/2" - 19-1/2" H, Satin Anodized Post, 9" Base	AO	—	89100
ADJUSTABLE HEIGHT POWER PEDESTALS - WITH INTEGRAL SEAT MOUNT & SLIDER			
12-1/4" - 15-1/4" Satin Anodized Post, 9" Base	AO	—	88101
14-1/2" - 19-1/2" Satin Anodized Post, 9" Base	AO	—	89101
ADJUSTABLE HEIGHT POWER PEDESTALS - WITH INTEGRAL SEAT MOUNT & SLIDER [EXTENDS 2.75" BELOW DECK]			
9"-12" H, Satin Anodized Post, 9" Base	AO	—	88301-275
12-3/4" - 17-3/4" H, Satin Anodized Post, 9" Base	AO	—	89301-275
ADJUSTABLE HEIGHT POWER PEDESTALS - WITH INTEGRAL SEAT MOUNT & CABLE ACTIVATED SLIDER [EXTENDS 2.75" BELOW DECK]			
9"-12" H, Satin Anodized Post, 9" Turned and Anodized Base	AO	—	88301-275BTAC



** Individual Carton

LAKESPORT 238 SERIES PRODUCTS

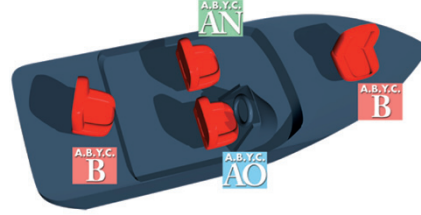


The Swivl-Eze Difference

- These sturdy 2-3/8" diameter bell pedestals have all the strength and durability you need for years of family fishing enjoyment.
- Hard anodized aluminum base pedestal tubes
- Bead blasted finish pounds the aluminum surface and closes up porosity
- All LakeSport™ 238 Series hardware is engineered to exceed ABYC standards

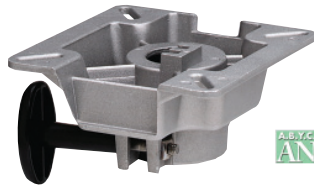
Type A/Operator Models lead the industry with these features:

- Ergonomic positive-locking handle with Stainless Steel components

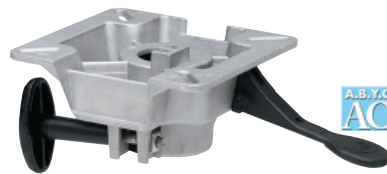


- Blue "AO" = Type A/Operator OK for Helm/Driver position
- Green "AN" = Type A/Non-Operator Not to be used at Helm/Driver position
- Red "B" = Type B Slow Speed Not to be used at Helm/Driver position For speeds not to exceed 5 mph

LakeSport 2-3/8" Seat Mounts

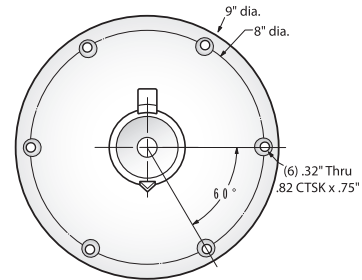


818440



818441

Description	ABYC Code	Bulk Packaging	Aftermarket Packaging
SEAT MOUNTS WITHOUT SLIDER INSTALLED HEIGHT: 5/8"			
Aluminum, w/ Friction Control, 3° Tilt	AN	818440	—
Aluminum, w/ Friction Control, 3° Tilt	AO	818441	—
SEAT MOUNTS WITH ALUMINUM SLIDER INSTALLED HEIGHT: 1"			
Aluminum, w/ Friction Control, 3° Tilt	AO	828461	—



LakeSport 2-3/8" Extension Posts

For LakeSport seat mounts only

Description	ABYC Code	Bulk Packaging	Aftermarket Packaging
FIXED HEIGHT EXTENSION POSTS (HEIGHT MEASURED FROM DECK TO TOP OF SEAT MOUNT)			
6.5" Height, Anodized Finish	AN	238665L1	—
10" Height, Anodized Finish	AN	238610L1	—
10" Height, Camo Finish	AN	238610KL1	—
11" Height, Anodized Finish	AN	238611L1	—
11" Height, Camo Finish	AN	238611KL1	—
13" Height, Anodized Finish	AN	238613L1	—
13" Height, Camo Finish	AN	238613KL1	—



LakeSport 2-3/8" Seat Pedestals



238813LSM



238911L



238911LSM



238916LKSM

Description	ABYC Code	Bulk Packaging*	Aftermarket Packaging**
HYDRAULIC POWER PEDESTALS W/ SEAT MOUNT (HEIGHT MEASURED FROM DECK TO TOP OF SEAT MOUNT)			
13" – 16" Adjustable Height, Anodized Finish	AO	238813LSM1	—
25" – 32" Adjustable Height, Anodized Finish	AO	238833LSM1	—
FIXED HEIGHT BELL PEDESTALS (HEIGHT MEASURED FROM DECK TO TOP OF SEAT MOUNT)			
9" Height	AO	238909L1	—
11" Height	AO	238911L1	—
13" Height	AO	238913L1	—
16" Height	AO	238916L1	—
FIXED HEIGHT BELL PEDESTALS W/ SEAT MOUNT (HEIGHT MEASURED FROM DECK TO TOP OF SEAT MOUNT)			
9" Height	AN	238909LSM1	—
13" Height	AN	238913LSM1	—
16" Height	AN	238916LSM1	—
ADJUSTABLE HEIGHT BELL PEDESTALS W/ SEAT MOUNT, MANUAL (HEIGHT FROM DECK TO TOP OF SEAT MOUNT)			
14"-20" Adjustable Height, Anodized	AN	—	2385400
12.5"-15.5" Adj. Height, J-Slot, Anodized	AO	—	2385405



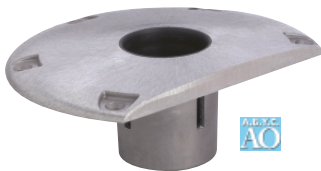
2385400



2385405

LakeSport 238 Socket Bases

Bases are interchangeable between LakeSport 238 Series and 238 Series.



238322



238312

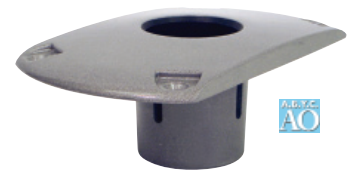


238312K



238322K

Description	ABYC Code	Bulk Packaging*	Aftermarket Packaging†
Aluminum 9" Round, Anodized Finish	AO	238312-1	238312-2
Aluminum 9" Round, Camo Finish	AO	238312K1	—
Aluminum 9" D-Shaped, Anodized Finish	AO	238322-1	238322-2
Aluminum 9" D-Shape, Camo Finish	AO	238322K1	—
Aluminum 9" Cut Both Sides, Anodized Finish	AO	238352-1	—



238352

* Bulk with UPC
 ** Individual Carton
 † -2 = Skin Pack

238 SERIES 2-3/8" PRODUCTS



238 Series has strength, style and corrosion-resistance to the core:

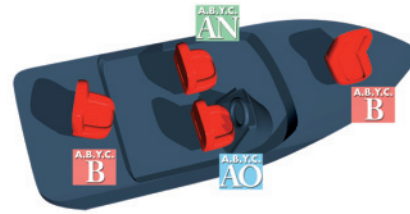
- Pedestal tubes are hard-anodized aluminum
- All springs are Stainless Steel
- Bases are bead-blasted (to close aluminum porosity) and clear coated

Smooth movement without wobble

- Slider has gear-tooth lock mechanism; locks solidly, disengages easily
- Slider rides smoothly on acetal linear bearings

Clean style, ergonomic design

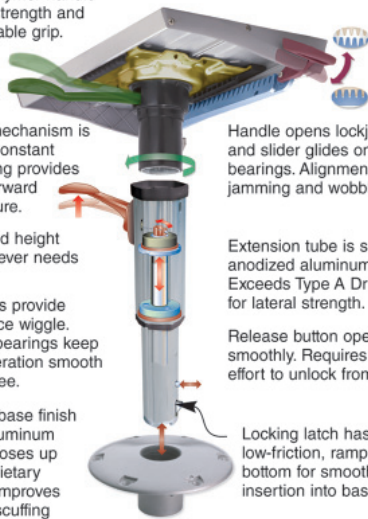
- Styling is clean and uncomplicated
- Handles are ergonomically designed to be easy on the hands and easy to reach



- ABYC AO** Blue "AO" = Type A/Operator OK for Helm/Driver position
- ABYC AN** Green "AN" = Type A/Non-Operator Not to be used at Helm/Driver position
- ABYC B** Red "B" = Type B Slow Speed Not to be used at Helm/Driver position For speeds not to exceed 5 mph

Not recommended to interchange with other manufacturers' products

Reinforced polymer handle is thicker for strength and more comfortable grip.



Seat mount mechanism is redesigned. Constant pressure spring provides continuous forward locking pressure.

Handle opens lockjaw gears... and slider glides on acetal linear bearings. Alignment tracks eliminate jamming and wobbling.

Cable-actuated height mechanism never needs adjustment.

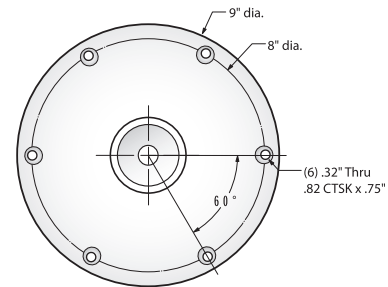
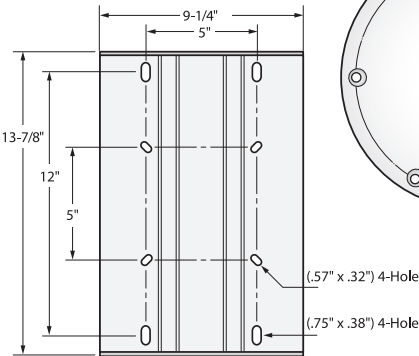
Extension tube is super-hard anodized aluminum alloy. Exceeds Type A Driver requirements for lateral strength.

Linear grooves provide support, reduce wiggle. Acetal linear bearings keep the whole operation smooth and wobble free.

Release button operates smoothly. Requires less effort to unlock from base.

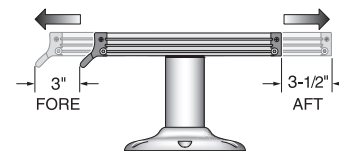
Bead-blasted base finish pounds the aluminum surface and closes up porosity. Proprietary clear-coating improves resistance to scuffing and corrosion.

Locking latch has low-friction, ramped bottom for smooth insertion into base.



238 Series Seat Mounts

Description	ABYC Code	Bulk Packaging	Aftermarket Packaging**
SEAT MOUNTS WITHOUT SLIDER			
Stainless Steel, 0° Tilt, Left Handle	AO	238140-1	—
Stainless Steel, 3° Tilt, Left Handle	AO	238141-1	—
Stainless Steel, 3° Tilt, Right Handle	AO	238142-1	238142-7
Stainless Steel, 3° Tilt, Forward Handle	AO	238143-1	238143-7
Plated Steel, 0° Tilt, Left Handle	AO	238150-1	—
Plated Steel, 3° Tilt, Left Handle	AO	238151-1	—
Plated Steel, 3° Tilt, Right Handle	AO	238152-1	238152-7
Plated Steel, 3° Tilt, Forward Handle	AO	238153-1	238153-7
SEAT MOUNTS WITH ALUMINUM SLIDER			
Plated Steel, 3° Tilt, Right Handle	AO	238162-1	—
Plated Steel, 0° Tilt, Right Handle	AO	238164-1	—



Slider Movement Range

** -7 = Clamshell

238 Series Pedestals & Extension Posts

Description	ABYC Code	Bulk Packaging	Aftermarket Packaging**
FIXED HEIGHT BELL PEDESTALS (HEIGHT MEASURED FROM DECK TO TOP OF SEAT MOUNT)			
8" Height	AO	238908-1	238908SM4*
10" Height	AO	238910-1	—
11" Height	AO	238911-1	—
12" Height	AO	238912-1	238912SM4*
13" Height	AO	238913-1	—
14" Height	AO	238914-1	—
15" Height	AO	238915-1	238915SM4*
FIXED HEIGHT EXTENSION POSTS (HEIGHT MEASURED FROM DECK TO TOP OF SEAT MOUNT)			
9" Height	AO	238609-1	238609-3
10" Height	AO	238610-1	238610-3
11" Height	AO	238611-1	238611-3
12" Height	AO	238612-1	238612-3
13" Height	AO	238613-1	238613-3
14" Height	AO	238614-1	238614-3
15" Height	AO	238615-1	238615-3
17" Height	AO	238617-1	—
25" Height	AO	238625-1	—
30" Height	B	238630-1	—
36" Height	B	238636-1	—
PRO-POLE EXTENSION POSTS** - TYPE "B" (HEIGHT MEASURED FROM DECK TO TOP OF SEAT MOUNT)			
27" Height	B	238027-1	238027-3
39" Height	B	238039-1	—
ADJUSTABLE HEIGHT POWER PEDESTALS (HEIGHT MEASURED FROM DECK TO TOP OF SEAT MOUNT)			
13" to 16-1/2" Height	AO	238512-1	238512-4
19-1/2" to 23" Height	AO	238522-1	238522-4
32-1/2" to 36" Height	B	238542-1	—



238 Series Socket Bases

Description	ABYC Code	Req. Dia. Mounting Hole	Bulk Packaging*	Aftermarket Packaging**
238 SERIES SOCKET BASES				
Aluminum, 9" Round	AO	3"	238312-1	238312-2
Aluminum, 9" D-Shape	AO	3"	238322-1	238322-2
Stainless Steel, 7" x 7", Square, Centered Hole	AO	3"	238333-1	—
Aluminum, 9" Cut Both Sides	AO	3"	238352-1	—
238 SERIES SOCKET BASE SPLASH GUARD				
Socket Splash Guard, Plastic	AO	—	238300-1	—



* Includes Plated Steel Seat Mount (238152-1)

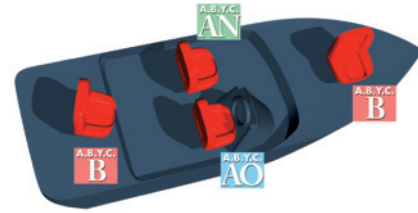
** -3 = Hang Tag, -3 = Skin Pack, -4 = Individual Carton

WEDGE 2" & 2-3/8" PRODUCTS



Wedge shaped components slide in for a snug, stable fit

- Type B mounts are designed to "lock" into post
- Engineered to prevent unintentional detachment
- Heavy-duty bushing with peripheral bearing system and exclusive "crush ribs" are individually sized for exact fit
- Tubing comes in several styles. Pedestals come in several lengths, including patented "J-Slot" adjustable height
- Precisely position locking tab positively locks post to base
- Wedge™ bushing locks in with a tight, solid fit
- 2-Point Stainless Steel riveting strengthens the bushing
- Strong base design has reinforcing ribs and improved profile to withstand the toughest conditions
- Bead blasting closes aluminum porosity. Brushing process provides long-lasting high-sheen finish



Blue "AO" = Type A/Operator OK for Helm/Driver position



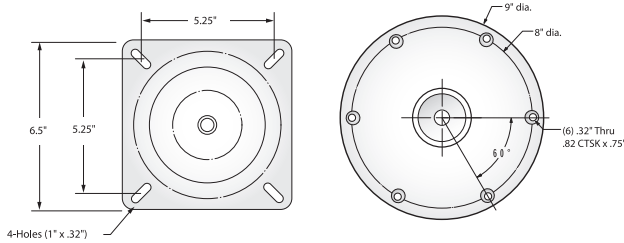
Green "AN" = Type A/Non-Operator Not to be used at Helm/Driver position



Red "B" = Type B Slow Speed Not to be used at Helm/Driver position For speeds not to exceed 5 mph

Not recommended to interchange with other manufacturers' products

Wedge 2" Seat Mounts



SP-18914



Description	ABYC Code	Installed Height	Bulk Packaging	Aftermarket Packaging**
Cast Aluminum, E-Coat Steel Pin, 3° Tilt	B	3"	—	SP-18914

Wedge 2" Extension Posts

Description	ABYC Code	Bulk Packaging	Aftermarket Packaging**
2" FIXED HEIGHT POSTS			
11" Satin Anodized	B	—	SP-28911
13" Satin Anodized	B	—	SP-28913
25" Satin Anodized	B	—	SP-28925
23/8" ADJUSTABLE HEIGHT POSTS - POWER PEDESTALS (W / INTEGRAL SEAT MOUNT)			
13" -19" Satin Anodized	B	—	SP-37904
24"-30" Satin Anodized	B	—	SP-37914



SP-28925

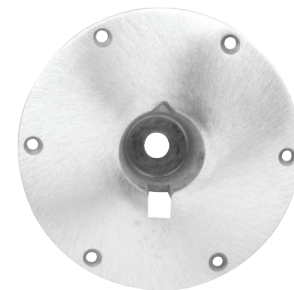
SP-28911

SP-37904



Wedge 2" & 2-3/8" Base Plates

Description	ABYC Code	Req. Dia. Mounting Hole	Depth Below Deck	Bulk Packaging	Aftermarket Packaging*
9" Round, Brushed Aluminum	AO	3.25"	2"	—	SP-68914



SP-68914



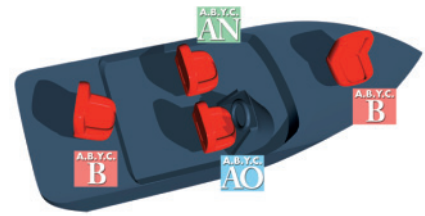
* Skin Pack
** Clamshell

SNAP-LOCK 1.77" PRODUCTS



Get the lock on quality. The 1.77" group delivers a great combination of value and performance

- All Snap-Lock series components snap and hold together
- Posts are sturdy bright-anodized aluminum
- Seat mounts are E-coated for superior corrosion-resistance
- Available in wide choice of bases, sizes and materials



The Swivl-Eze Difference

- Type A/Operator models have ergonomic swivel locking handle with Stainless Steel components
- Seat mounts have been designed to permanently lock into the post in any swiveling position
- Meets ABYC H31.6.1
- All posts include a larger locking clip with a metal insert that allows the posts to lock into bases for added safety. Just press the button release.
- Both the snap-lock and locking clip are engineered to prevent unintentional detachment
- Posts are sized on both ends for a precision fit

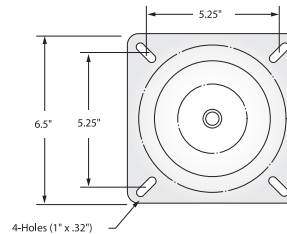


Blue "AO" = Type A/Operator OK for Helm/Driver position

Green "AN" = Type A/Non-Operator Not to be used at Helm/Driver position

Red "B" = Type B Slow Speed Not to be used at Helm/Driver position For speeds not to exceed 5 mph

Not recommended to interchange with other manufacturers' products



Snap-Lock 1.77" Seat Mounts

Description	ABYC Code	Installed Height	Bulk Packaging	Aftermarket Packaging**
Black E-Coat Steel, 3° Tilt	AN	2"	19000	SP-19000

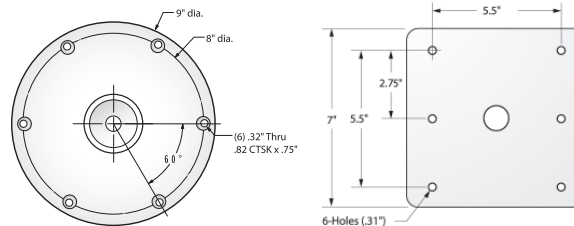
Snap-Lock 1.77" Posts

Description	ABYC Code	Bulk Packaging	Aftermarket Packaging**
FIXED HEIGHT POSTS			
11" H, Clear Anodized	B	29110	SP-29110
13 H, Clear Anodized	B	29130	SP-29130
25 H, Pro-Post, Clear Anodized	B	29250	—
ADJUSTABLE HEIGHT POSTS - POWER PEDESTALS WITH INTEGRAL SEAT MOUNTS			
16-20" H, Clear Anodized	B	39004	SP-39004
24"-30" H, Pro-Post, Clear Anodized	B	39204	SP-39204

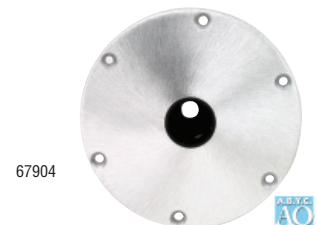
29110



Snap-Lock 1.77" Base Plates



Description	ABYC Code	Req. Dia. Mounting Hole	Depth Below Deck	Bulk Packaging	Aftermarket Packaging*
7" x 7", Zinc Plated Steel	AO	2.5"	3"	69772	—
7" x 7", Stainless Steel	AO	2.75"	3"	67904	SP-67904
9" Round, Aluminum	AO	2.5"	3"	69773	SP-69773



* Skin Pack
** Clamshell

LOCK'N-PIN 3/4" PIN PRODUCTS



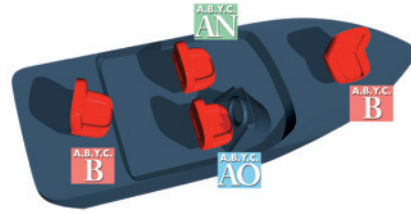
Swivl-Eze is the #1 supplier of 3/4" pin seating hardware. Here's why:




- The 3/4" system gives you outstanding economical performance
- The design is proven by decades of experience
- Posts are available as fixed, manually adjustable or power adjustable
- Seat mounts, posts and bases are available in steel, aluminum or Stainless Steel

The Swivl-Eze Difference

- The patented Lock'N-Pin system leads the industry in safety
- Lock'N-Pin prevents unintentional detachment for seat mounts, posts and bases
- Lock'N-Pin products exceed ABYC Standard H31.6.1

Not recommended to interchange with other manufacturers' products



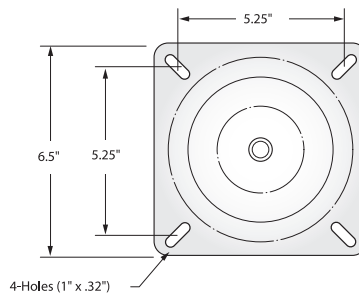
-  Blue "AO" = Type A/Operator OK for Helm/Driver position
-  Green "AN" = Type A/Non-Operator Not to be used at Helm/Driver position
-  Red "B" = Type B Slow Speed Not to be used at Helm/Driver position For speeds not to exceed 5 mph

Lock'N-Pin 3/4" Pedestal Packages

Includes Brushed Aluminum Post, Zinc Plated Seat Mount w/ Spring & Base Plate.

Description	ABYC Code	Post	Seat Mount	Base Plate	Bulk Packaging	Aftermarket Packaging*
11" Post, 6"x8" SS Base Plate, Non-Threaded	B	2114	1002	66839	—	96839
11" Post, 7"x7" SS Base Plate, Non-Threaded	B	2114	1002	67739	—	97739
11" Post, 7"x7" SS Base Plate, Threaded	B	2114-T	1002	67739-T	—	97739-T
13" Post, 7"x7" SS Base Plate, Threaded	B	2134-T	1002	67739-T	—	97739-T

Lock'N-Pin 3/4" Pin Seat Mounts



Description	ABYC Code	Installed Height	Bulk Packaging	Aftermarket Packaging**
Zinc Plated Steel, 3° Tilt, 23/4" Steel Pin, w / Spring	B	2"	1002	SP-1002
Zinc Plated Steel, 3° Tilt, 21/2" Steel Pin	B	1"	1002-S	—
All Stainless Steel, 3° Tilt, 23/4" Stainless Steel Pin	B	1"	1002-SS	—
Cast Aluminum, 3° Tilt, 3" Stainless Steel Pin	B	1"	1063	—

* Individual Carton
** Clamshell

Lock'N-Pin 3/4" Pin Posts

Description	ABYC Code	Bulk Packaging	Aftermarket Packaging**
FIXED HEIGHT POSTS			
6" Hgt, 1.5" Dia., Brushed Aluminum, Non-Threaded, Steel Pin	B	2064	—
11" Hgt, 1.5" Dia., Brushed Aluminum, Non-Threaded, Steel Pin	B	2114	SP-2114
11" Hgt, 1.5" Dia., Brushed Aluminum, Threaded, Steel Pin	B	2114-T	SP-2114-T
13" Hgt, 1.5" Dia., Brushed Aluminum, Non-Threaded, Steel Pin	B	2134	SP-2134
13" Hgt, 1.5" Dia., Brushed Aluminum, Threaded, Steel Pin	B	2134-T	SP-2134-T
13" Hgt, 1.5" Dia., Brushed Aluminum, Non-Threaded, SS Pin	B	2134-SS	—
13" Hgt, 1.5" Dia., Brushed Aluminum, Threaded, SS Pin	B	2134-T-SS	—
13" Hgt, 1.5" Dia., Polished SS, Offset Post, Threaded, SS Pin	B	7153-T-SS	SP-7153-T-SS
16" Hgt, 1.5" Dia., Brushed Aluminum, Non-Threaded, Steel Pin	B	2164	SP-2164
16" Hgt, 1.5" Dia., Brushed Aluminum, Threaded, Steel Pin	B	2164-T	SP-2164-T
24" Hgt, 1.5" Dia., Brushed Aluminum, Pro-Post, Non-Threaded, Steel Pin	B	2244	SP-2244
24" Hgt, 1.5" Dia., Brushed Aluminum, Pro-Post, Threaded, SS Pin	B	2244-T-SS	—
ADJUSTABLE HEIGHT POSTS - MANUAL			
25"-31" Hgt, 1.5 Dia., Brushed Alum., Pro-Post, Non-Thread, Steel Pin	B	2244-ADJ	SP-2244-ADJ
25"-31" Hgt, 1.50 Dia., Brushed Alum., Pro-Post, Threaded, Steel Pin	B	2244-ADJ-T	SP-2244-ADJ-T
ADJUSTABLE HEIGHT POSTS - POWER PEDESTALS W/ INTEGRAL SEAT MOUNTS			
14"-17" Hgt, 1.77" Dia., Brushed Aluminum, Non-Threaded, Steel Pin	B	3004	SP-3004
14"-17" Hgt, 1.77" Dia., Brushed Aluminum, Threaded, Steel Pin	B	3004-T	SP-3004-T
24"-30" Hgt, 1.77" Dia., Brushed Alum., Pro-Post, Non-Thread., Steel Pin	B	3204	SP-3204
24"-30" Hgt, 1.77" Dia., Brushed Alum., Pro-Post, Threaded, Steel Pin	B	3204-T	SP-3204-T
24"-30" Hgt, 1.77" Dia., Brushed Alum., Pro-Post, Threaded, SS Pin	B	3204-T-SS	—
ADJUSTABLE HEIGHT POSTS - POWER PEDESTALS FOR USE WITH 3/4" PIN SEAT MOUNTS			
15"-18" Hgt, 1.77" Dia., Brushed Aluminum, Non-Threaded, Steel Pin	B	3004-R	SP-3004-R
15"-18" Hgt, 1.77" Dia., Brushed Aluminum, Threaded, Steel Pin	B	3004-R-T	SP-3004-R-T
15"-18" Hgt, 1.77" Dia., Brushed Aluminum, Threaded, SS Pin	B	3004-R-T-SS	—
24"-30" Hgt, 1.77" Dia., Brushed Aluminum, Non-Threaded, Steel Pin	B	3204-R	SP-3204-R
24"-30" Hgt, 1.77" Dia., Brushed Aluminum, Threaded, Steel Pin	B	3204-R-T	SP-3204-R-T
24"-30" Hgt, 1.77" Dia., Brushed Aluminum, Threaded, SS Pin	B	3204-R-T-SS	—



2114-T



7153-T-SS



2134-SS



2244-ADJ-T



3204-T



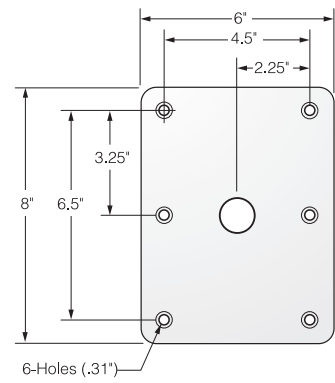
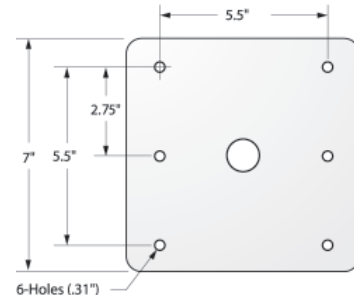
3004-R



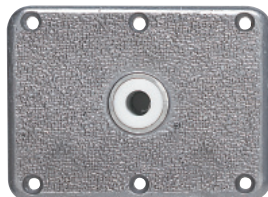
** Clamshell

Lock'N-Pin 3/4" Pin Posts

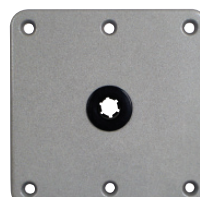
Description	ABYC Code	Req. Dia. Mounting Hole	Depth Below Deck	Bulk Packaging	Aftermarket Packaging**
ZINC PLATED STEEL					
6" x 8", Non-Threaded, Bronze Bushing	B	2.75"	2.5"	6682	—
6" x 8", Threaded, Bronze Bushing	B	2.75"	3.5"	6682-T	—
7" x 7", Non-Threaded, Nylon Bushing	B	2.75"	2.5"	67729	—
7" x 7", Threaded, Nylon Bushing	B	2.75"	3.5"	67729-T	—
7" x 7", Threaded, Bronze Bushing	B	2.75"	3.5"	6772-T	—
7" x 7", Offset Hole, Threaded, Nylon Bushing	B	2.75"	3.5"	67729-SC-T	—
ALUMINUM					
6" x 8", Non-Threaded, Nylon Bushing	B	3.5"	2.5"	6684	—
7" x 7", Non-Threaded, Nylon Bushing, Clear Coat	B	3.5"	2.5"	67749	SP-67749
7" x 7", Non-Threaded, Nylon Bushing, Bead Blast	B	3.5"	2.5"	67749A	—
8" Round, Non-Threaded, Nylon Bushing	B	2.75"	2.5"	68R4	SP-68R4
9" Round, Inverted, Non-Threaded, Nylon Bushing	B	—	2.5"	69R4-I	SP-69R4-I
STAINLESS STEEL FINISH WITH STEEL LIP TUBE					
4" x 8", Non-Threaded, Nylon Bushing	B	1.5"	2.5"	64839	SP-64839
4" x 8", Non-Threaded, Bronze Bushing	B	1.5"	2.5"	6483	—
6" x 8", Non-Threaded, Nylon Bushing	B	2.75"	2.5"	66839	SP-66839
6" x 8", Threaded, Nylon Bushing	B	2.75"	3.5"	67739-T	—
7" x 7", Non-Threaded, Nylon Bushing	B	2.75"	2.5"	67739	SP-67739
7" x 7", Non-Threaded, Bronze Bushing	B	2.75"	2.5"	6773	—
7" x 7", Threaded, Bronze Bushing	B	2.75" x	3.5"	6773-T	—
7" x 7", Offset Hole, Non-Threaded, Nylon Bushing	B	2.75"	2.5"	67739-SC	—
ALL STAINLESS STEEL					
7" x 7", Non-Threaded, Nylon Bushing	B	2.75"	2.5"	67739-SS	—
7" x 7", Non-Threaded, Bronze Bushing	B	2.75"	2.5"	6773-SS	—



67729



6684



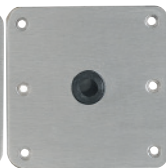
67749



67739-SS



66839



67739



69R4



69R4-I

** Skin Pack

ACCESSORIES

ECONOMY PEDESTALS, SWIVELS & ADAPTERS

Swivl-Eze has the boating experience to deliver all the accessories you want:

- Seating accessories for retrofitting and improving
- Adapters to change a post installation or swivel location
- And table mounts to make boating more convenient and enjoyable

Economy Pedestals

Little on price, big on performance.

- Exceptional durability
- Reinforced welded joints
- Black powder coated for a long lasting finish



Description	Bulk Packaging	Aftermarket Packaging Δ
Economy Pedestal, 7"	—	90720
Economy Pedestal, 13"	—	91320
Economy Adjustable Pedestal, 11-1/2" - 17-1/2"	—	91320-ADJ

Shock Absorber

Add comfort to your boating with our aluminum shock absorber.

- Made from tempered aluminum with stainless steel spring
- Fits all 5-1/4" 4" standard hole patterns

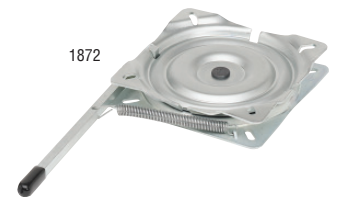


1570

Description	Bulk Packaging	Aftermarket Packaging
Shock Absorber	1570	—

Seat Swivels

Description	Bulk Packaging	Aftermarket Packaging \dagger
Zinc Plated, 0° Tilt, 4-Way Locking	1872	—
Retail Display, 0° Tilt, Black Powder Coated, 10 p/Box	—	17720
Retail Display, 3° Tilt, Black Powder Coated, 10 p/Box	—	17721



1872



17720

Seat Mounts

Bench Style Seat Mounts

- Great for mounting seats in jon boats
- Constructed of quality aluminum.

The Angler™ Seat Mount

- Ideal for use with Pro type seats
- Adjusts from flat to 22° or 45°

Clamp-On Boat Seat Swivel

- Adjusts from 7-1/2" - 18"
- Black powder coated swivel
- Fits most seat hole patterns

Description	Bulk Packaging	Aftermarket Packaging**
BENCH STYLE SEAT MOUNTS		
Bench Style Kit: Seat Swivel, Seat Plate and 15" Rail	—	15600-3*
Bench Style Kit: Seat Plate an 15" Rails	—	SP-15900**
Bench Style Seat Plate Only	—	SP-15100**
Bench Style 30" Rails Only	—	SP-15200**
THE ANGLER™ SEAT MOUNT		
Seat Mount	—	1002-ADJ-3*
CLAMP-ON BOAT SWIVEL		
Boat Swivel	—	15700-3*



15600



1002-ADJ-3



15700

Δ Label
 \dagger PDQ Display

** Individual Carton

Deck Slide

- Mounts directly to the boat deck
- 1-5/8" total height
- Constructed of strong aluminum
- Convenient front control operation

Description	Bulk Packaging	Aftermarket Packaging
Deck Mounted Seat Slide	815000	—



Swivl-Offset

Need more room to maneuver? The 6" Swivl-Eze offset allows additional seat clearance in any position.

Description	Bulk Packaging	Aftermarket Packaging*
Swivl-Offset	—	7062-3



Table Top Mount System

This sturdy table mount system is available in two sizes.

Description	Bulk Packaging	Aftermarket Packaging**
Top Table Mount: 6" diameter round stainless steel with SS pin and cup washer.	17510	—
Brushed aluminum post with tension knob. Threaded for use in base. 25"	17525	—
6" diameter round Stainless Steel base, threaded. Flush mounts to deck. Low profile.	—	952



Pedestal Pin Post Adapter

Covers 1.77" pin posts to fit within 3/4" pin bases

Description	Bulk Packaging	Aftermarket Packaging**
Adapter	—	SP-14000



* Individual Carton
** Poly Bag