

CONTROL VALVE TYPE 3

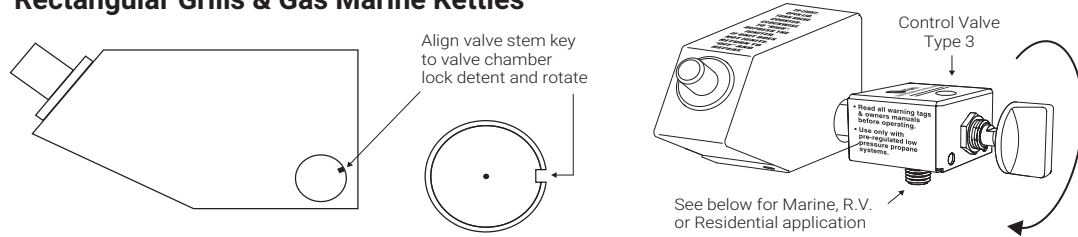


MADE IN THE
U.S.A.

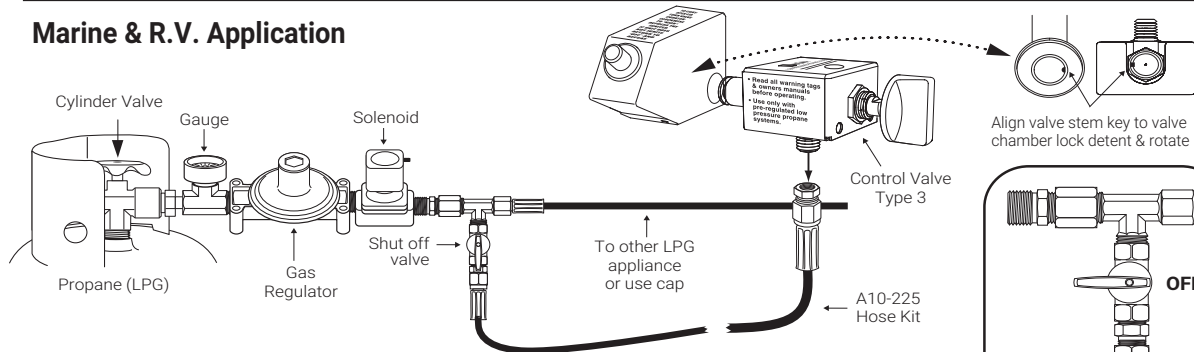
For pre-regulated Low Pressure LPG (propane) systems, this brass control valve is designed to allow use of 9" x 18" Rectangular Grills & Gas Marine Kettles in Residential, Marine, and R.V. LPG applications. It is designed to tap into the low pressure side of the regulator.

FOR USE WITH MAGMA A10-225 LPG HOSE KIT (Sold Separately)

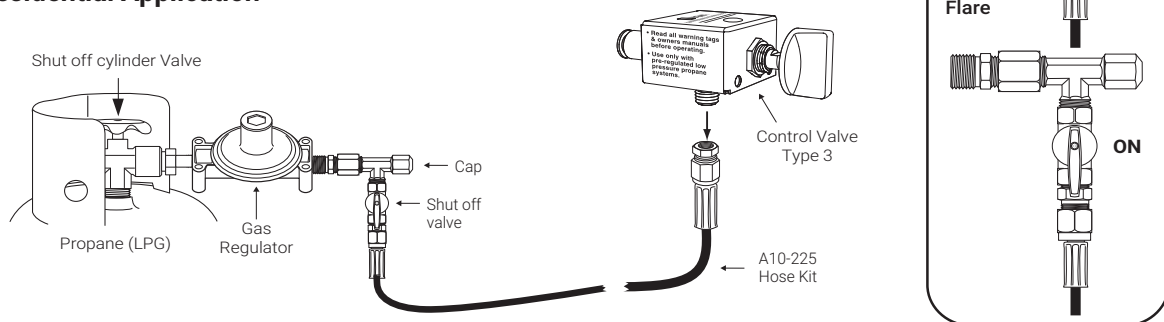
9" x 18" Rectangular Grills & Gas Marine Kettles



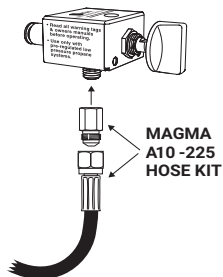
Marine & R.V. Application



Residential Application



Safety Instructions for Low Pressure LPG (Propane) Control Valve



- Use this valve only in conjunction with Magma A10-225 hose kit. Use of other hose, valves, or fitting may result in damage or injury.
- Read all warning labels on barbeque, valve and instruction sheets supplied with the products. Read complete grill "OWNERS MANUAL" before attempting to install or operate.
- A primary shutoff valve (supplied with A10-225 hose kit) must be used in conjunction with this control valve at the point of connection into your system. This allows for shut off of the gas supply to the hose leading to the grill.
- Always check for leaks with a soap suds solution before attempting to light the grill.

WARNING: NEVER USE A FLAME TO CHECK FOR GAS LEAKS!

A10-220 Type 3 - Low Output For all 9" x 18" Rectangular Grills & Gas Marine Kettles

Nominal Operating Pressure
11" Water Column (0.4 PSI)
Nominal Gas Consumption
10,700 BTU

MAGMA PRODUCTS, INC. • 3940 PIXIE AVE. • LAKEWOOD, CA 90712 • TEL: (562) 627-0500 • FAX: (562) 627-0550

MagmaProducts.com • e-mail: mail@MagmaProducts.com