

Tel: 651-486-2010  
 Fax: 651-486-6989

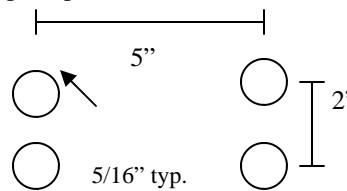
E-mail: info@marinetech.info

**65-5200 - 65-5201**

Navigator 52 Pound Thrust 12 Volt DC Trolling Motor used in freshwater.(65-5200) saltwater (65-5201). Navigator® engine mounted trolling motors feature the "Tournament Series" remote control with pulse width modulation electronics and soft start technology. Each Navigator electric trolling system includes a handheld variable speed controller with forward & reverse.

This state-of-the-art electronic system greatly extends the trolling time on a single battery charge. Navigator motors are designed for easy installation and come complete with cabling. The Navigator automatically rises out of the water as the boat reaches planing speed. At planing speed there is no loss of speed or performance. When the boat comes to a stop, the Navigator slides back into the water, ready to use. Dimensions/Specs :Forward speed will vary with wind/water/boat weight. Typical speed: approx. 1-3 mph. Battery life before re-charging: typical 3-4 hrs again depending upon speed.

- (1) motor- 12 volt operating current 2 to 24 amps.
- Height: 10.5"
- Width : 7"
- Depth : 10.75"
- Wgt: 20lbs



Cavitation bracket hole dim.

**65-5201** - Saltwater version has stainless steel hardware for saltwater protection.

