



**RV/MARINE PRODUCT DATA SHEET**

OEM: 1901-0003  
 AFTERMARKET: 1901-0013

The Next Generation SHURflo pumps guarantee quiet operation and smooth performance while providing the ultimate in durability and reliability. Designed and built especially for the harsh marine environment, the Next Generation SHURflo pumps are equipped with sealed switches and sealed motors.

**TYPICAL APPLICATIONS**

Single-fixture RV/Marine fresh water installation. Other uses may include 12V DC pressurized water systems in cabins. This pump may be used for general water transfer. For other applications contact SHURflo.

**PUMP:**

Type: 5 Chamber Diaphragm  
 Ports: 1/2"-14 NPSM-Male.  
 Liquid: 130 °F [54 °C] Max  
 Prime: 4 feet [1.82 M]  
 Inlet PSI: 10 PSI [2.1 Bar] Max  
 Run Dry: Yes

**ELECTRICAL:**

Motor: 12VDC Permanent Magnet, Intermittent Duty  
 Protection: Thermal Overload, Automatic Restart  
 Leads: 16 AWG, 6.5" [16.5 cm] Red +, 1.5" [3.8 cm] Black -  
 Fuse: 3 Amp Recommended  
 Control: Adjustable Switch. Shut-Off 30 PSI [2.0 Bar] ± 5 PSI [0.4 Bar]  
 Restart 15 PSI [1.0 Bar] ± 5 PSI [0.4 Bar]

**MATERIALS:**

Housing: Nylon  
 Valves: EPDM  
 Diaphragm: Santoprene  
 Hardware: Stainless Steel

**APPROVALS:**

Ignition Protected, CE, ISO 8846

**WARRANTY:**

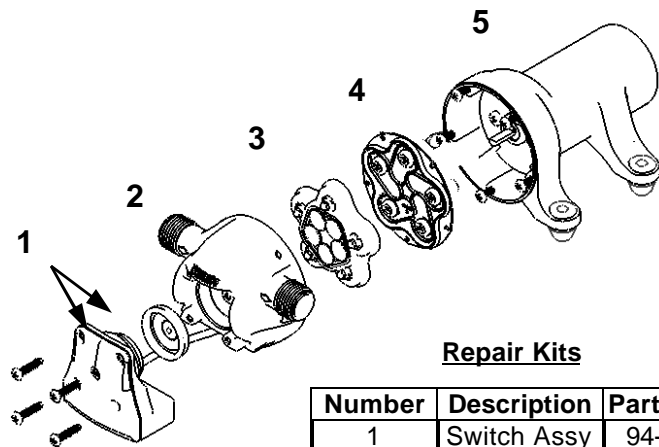
1 Year Limited Warranty  
 See SB-1050 For Full Marine Warranty Details

**SHIPPING:**

Net Weight (Boxed): 1.9 Lbs [0.9Kg]  
 Carton Weight:  
 Carton Size:

**RELATED DOCUMENTS:**

Catalog: MS-030-140  
 Installation Manual: 911-733  
 Maintenance: 911-733  
 Applications Spec Guide: MS-020-005  
 Warranty: SB-1050

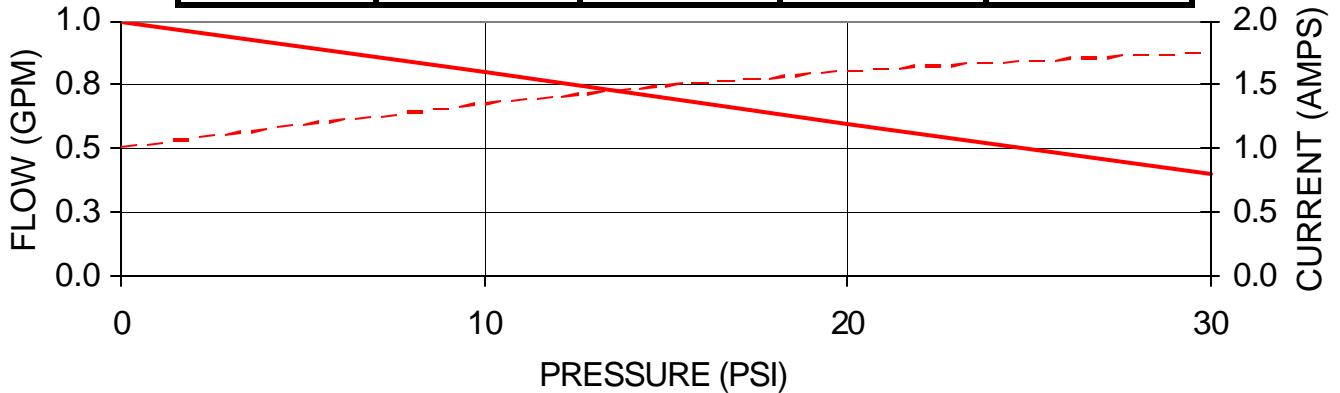


**Repair Kits**

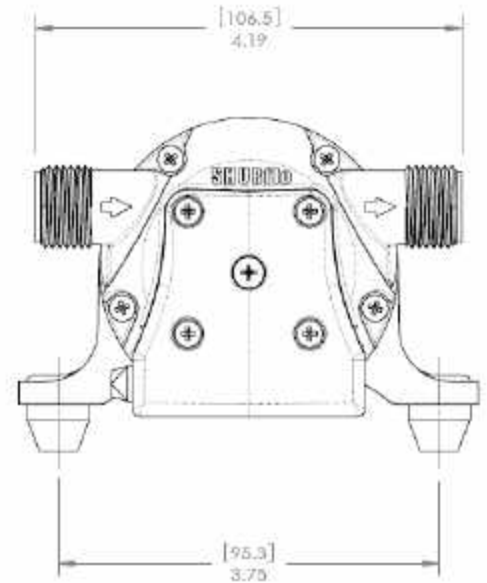
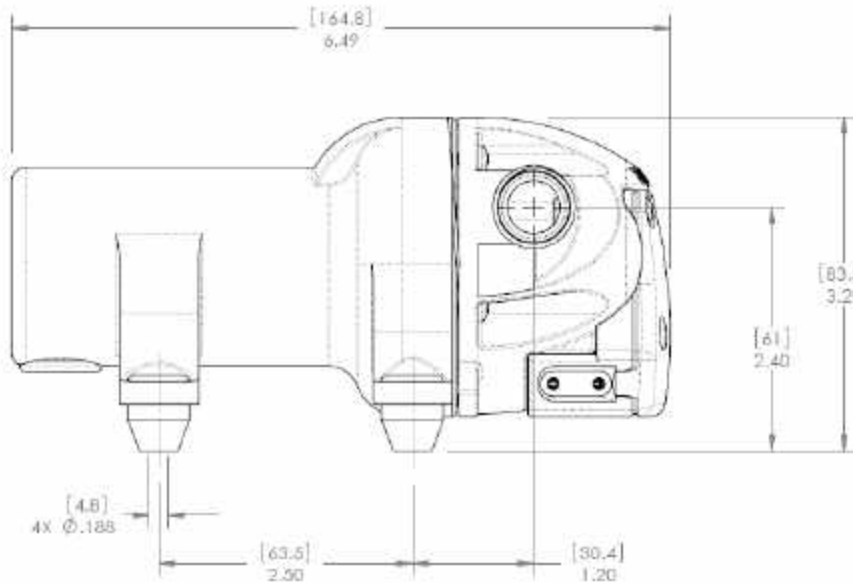
Number	Description	Part Number
1	Switch Assy	94-706-00
2	Upper Hsg	N/A
3	Valve Assy	N/A
4	Drive Assy	N/A
5	Motor	N/A

PERFORMANCE @ 12V DC

PRESSURE		FLOW		CURRENT
BAR	PSI	GPM	LPM	AMPS
0.0	0	1.0	3.7	1.0
0.7	10	0.8	3.0	1.35
1.4	20	0.6	2.2	1.60
2.1	30	0.4	1.5	1.80



— FLOW - - - AMPS



Visit our Web Site at <http://www.shurflo.com>  
 Shurflo reserves the right to update specifications,  
 change prices, or make substitutions without notice.

**SHURflo**  
 5900 Katella Avenue  
 Cypress, CA 90630  
 Phone (562) 795-5200  
 Toll Free (800) 854-3218  
 Fax (562) 795-7564

**SHURflo East**  
 52748 Park Six Court  
 Elkhart, IN 46514-5427  
 Phone (562) 795-5200  
 Toll Free (800) 854-3218  
 Fax (574) 264-2169

**SHURflo Europe, Middle East, Africa**  
**Pentair Water Belgium bvba**  
 Industriepark Wolfstee, Toekomstlann 30  
 B-2200 Herentals, Belgium  
 Phone +32-14-283500  
 Fax +32-14-283505

 **Pentair Water**  
**FLOW TECHNOLOGIES GROUP**  
 5900 Katella Ave, Cypress, CA 90630  
 Phone (562) 795-5200 • (800) 854-3218 • Fax (562) 795-7564  
[www.shurflo.com](http://www.shurflo.com)