

SHERWOOD
QSC

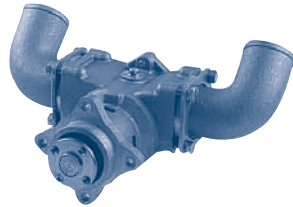


G2601A

Cummins

Part No.	Description	Qty
26000K	Impeller	1
19879	O-Ring (Cover)	1
23827	Mech. Seal	1
24079	Slinger	1
19869	Bearing Seal	1
24223	Shaft & Bearing	1
24075	Cam	1
19714	Cam Screw	1
24074	Cover	1
24073	Wearplate	1
19626	Cap Screw	3
21573	Lock Washer	3
19712	O-Ring	1
19762	Ret. Ring	1
19866	Washer	1
19708	Bolt	4
19867	Ret. Ring	1
HP1720-0212	O-Ring	2
G-2601AMNK	Minor Service Kit	1
G-2601AMJK	Major Service Kit	1

SHERWOOD
QSB

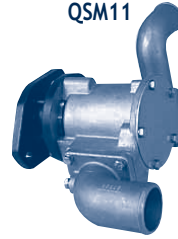


P2701X

Cummins

Part No.	Description	Qty
27000K	Impeller	1
15945	O-Ring (Cover)	1
23799	Mech. Seal	1
15951	Ball Bearing	2
24147	Shaft	1
18271	Cam	1
19714	Cam Screw	1
18742	Cover	1
24162	Pin/Plate Assy.	1
15952	Snap Ring (SM)	2
15942	Snap Ring (LG)	1
24150	Spacer	1
15944	Lock Washer	3
19626	Bolt	3
339	Plug	1
15959	Washer	1
24156	Slinger	1
P2701XMNK	Minor Service Kit	1
P2701XMJK	Major Service Kit	1

SHERWOOD
QSM11



G1810 (Old # G1809)
Being Replaced by G-1814X

Cummins # 3349392

Part No.	Description	Qty
18000K	Impeller	1
23512	Mechanical Seal	1
23272	Shaft	1
23489	Ball Bearing	2
19869	Bearing Seal	1
23387	Bearing Spacer	1
23425	Bearing Shield	1
19836	Wearplate	1
19837	End Cover	1
19626	Cover Screw	5
21561	Quad Ring	2
21106	Cam Liner (G1810)	2
21533	Cam Liner (G1809)	2
19867	Snap Ring (LG)	1
19762	Snap Ring (SM)	2
21566	Pin	1
15944	Lock Washer	4
19866	Washer-spacer	1
HP 1720-0213	Mounting Gasket	1
HP 1720-0212	Port O-Ring	1
G-1810MNK	Minor Service Kit	1
G-1810MJK	Major Service Kit	1

JABSCO
VT55MBC / VT555MBC / NT855M



7420-0101

Cummins

Part No.	Description	Qty
17935-0001	Impeller	1
816-0000	Gasket	1
6407-0010	Mechanical Seal	1
834-0001	Cam	1
91005-0040	Cam Screw	1
2574-0000	Wearplate	1
12062-0000	End Cover	1
91005-0040	Cover Screws	5
92600-0040	Ball Bearing	1
817-0000	Inner Bearing Seal	1
818-0000	Outer Bearings Seal	1
18711-0000	Snap Ring (SM)	1
18712-0000	Snap Ring (LG)	1
9527	Shaft	1
92650-0070	Plug	2
9214-0001	Key	1
7420-0101MNK	Minor Service Kit	1
7420-0101MJK	Major Service Kit	1

JABSCO
NH250M

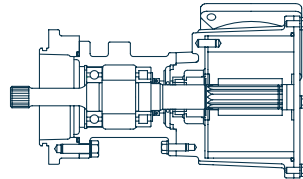


3570

Cummins # 21731 / 180128

Part No.	Description	Qty
836-0001	Impeller	1
816-0000	Gasket	1
6408-0000	Mechanical Seal	1
3181-0000	Slinger	1
92600-0040	Ball Bearing	1
92700-0080	Inner Bearing Seal	1
818-0000	Outer Bearing Seal	1
7257-0000	Cam & Wearplate	1
91005-0040	Cam Screw	1
2574-0000	Wearplate Only	1
12062-0000	End Cover	1
91005-0040	Cover Screw	5
18711-0000	Snap Ring (SM)	1
18712-0000	Snap Ring (LG)	1
3570MNK	Minor Service Kit	1
3570MJK	Major Service Kit	1

JABSCO
KTA19



18770-0003

Cummins # 3866609

Part No.	Description	Qty
18789-0001	Impeller	1
18753-0434	Gasket	1
96080-0371	Water Seal	1
18753-0495	Cover Screws	4
18785-0000	Cam	1
92701-0180	Oil Seal	1
18753-0527	Pump End Bearing	1
18753-0526	Drive End Bearing	1
18753-0525	Shaft	1
18787-0000	Wearplate	1
18784-1000	End Cover	1
18770-0003MNK	Minor Service Kit	1
18770-0003MJK	Major Service Kit	1

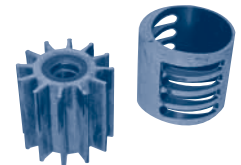
JABSCO
K38



15780-0000

Part No.	Description	Qty
90202-0000	Minor Service Kit	1
99202-0000	Major Service Kit	1

CUMMINS



Impeller Cross-Reference

Cummins Impeller Cross-Reference

Cummins Part No.	Depco Part No.
160596	JA 836-0001
166758	JA 836-0001
217308	JA 17370-0001
556540	JA 836-0001
556850	JA 836-0001
650607	JA 920-0001
3008503	JA 17370-0001
3008505	JA 17374-1000
4019403	SH 18000K
21601R	JA 836-0001
3349198	SH 15000K
3802444	SH 17000K
3897337*	SH 17000K
3908220*	SH 10615K
3916720*	SH 15000K
3916852*	SH 17000K
3925236*	SH 17000K
3972366	SH 26000K
3974456	SH 27000K
CO1320292	SH 10615K
CO1320348	SH 10615K
Impeller Puller	page 167

* These Cummins kits include additional parts.
Our number references only the impeller.