

## CLUB SERIES

### Undermount Bar/Prep Sink Model CS-1105



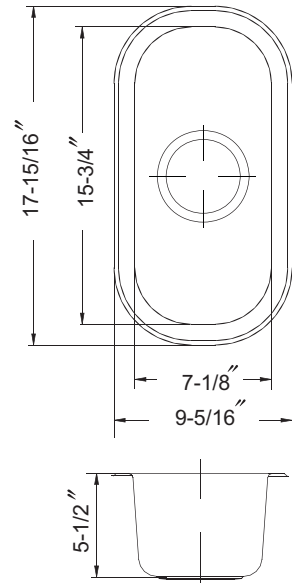
CS-1105

### FEATURES

- Premium grade T-304 stainless steel
- 5-1/2" depth • 18 gauge
- StoneGuard™ undercoating over Super-Silencer pad
- SpecPlus™ edge
- Lustrous satin with highlighted rim
- Fits 18" sink base
- 3-1/2" drain opening
- Supplied with cutout template, fasteners and instructions
- Complies with ASME A112.19.3-2000, UPC®
- Lifetime Limited Warranty



ASME A112.19.3-2000



### OPTIONAL ACCESSORIES

- Bottom Grid: BG-1100
- Colander : CL-1120
- Strainer: 190-9180

| OVERALL DIMENSIONS  | EACH BOWL        | CUTOUT SIZE  | PACKAGING*   | WEIGHT*        |
|---------------------|------------------|--------------|--------------|----------------|
| 9-5/16" x 17-15/16" | 7-1/8" x 15-3/4" | See Template | 1/32/40 pcs. | 6/230/250 lbs. |

\*Standard packaging: Single boxed /Pallet of single boxed/Pallet of bulk pack.  
All dimensions are in inches. Specifications subject to change without notice.

Project/Job name \_\_\_\_\_

Architect/Engineer \_\_\_\_\_

Contractor \_\_\_\_\_

Model \_\_\_\_\_ Q'ty \_\_\_\_\_

Notes \_\_\_\_\_

### Installation profile

